

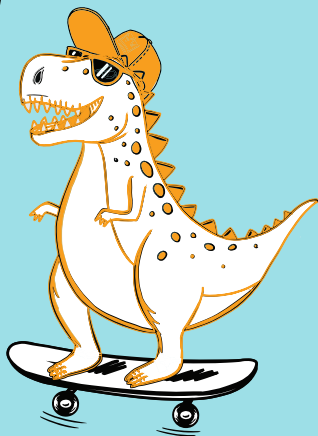


BEER LIST



BROWNS CRAFTHOUSE[®]
KITCHEN  BAR

WHY BE SALTY WHEN YOU CAN BE MALTY?



ON TAP

SOCIAL LAGER® 5.0% ABV	6¾
SOCIAL IPA 6.5% ABV	7¼
WHITE ROCK BEACH 'PEACE ARCH' PILSNER 4.9% ABV	7¾
STRANGE FELLOWS 'TALISMAN' PALE ALE 4.0% ABV	8
TIN WHISTLE PEACH CREAM ALE 5.2% ABV	8
HOYNE 'DARK MATTER' 5.3% ABV	8¼
FIELD HOUSE SALTED LIME MEXICAN LAGER 4.9% ABV	8½
FERNIE 'RIDGEWALK' RED ALE 5.0% ABV	8½
YELLOW DOG 'CHASE MY TAIL' PALE ALE 5.2% ABV	8½
DRIFTWOOD 'FAT TUG' IPA 7.0% ABV	8½
33 ACRES OF SUNSHINE FRENCH BLANCHÈ 5.0% ABV	8¾
STORM 'PINEAPPLE PARADISE' PILSNER 5.0% ABV	8¾
SUPERFLUX 'HAPPYNESS' WEST COAST IPA 6.5% ABV	9
WILDEYE 'NEON NECTAR' HAZY IPA 6.8% ABV	9
STELLA ARTOIS (400ml) 5.0% ABV	10
BROKEN LADDER 'APPLE & HOPS' CIDER 6.0% ABV	10
GUINNESS (560ml) 4.3% ABV	11
FUGGLES ROTATING TAP	MP
PHILLIPS 'DINO SOUR' ROTATING TAP	MP
TWIN SAILS ROTATING TAP	MP

PB & B ^(1oz & 385ml)

skrewball peanut butter
whiskey & a social lager®

12