

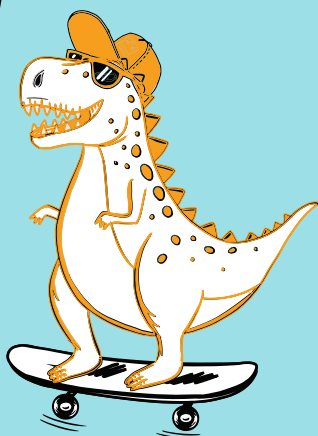


BEER LIST



BROWNS CRAFTHOUSE[®]
KITCHEN  BAR

WHY BE SALTY WHEN
YOU CAN BE MALTY?



ON TAP

SOCIAL LAGER® 5.0% ABV	7¼
SOCIAL IPA 6.5% ABV	7¾
BUD LIGHT 4.0% ABV	8
GREAT WESTERN 'ORIGINAL 16' CANADIAN PALE ALE 5.0% ABV	8
MOLSON 'BOHEMIAN' LAGER 5.0% ABV	8
MOLSON 'OLD STYLE' PILSNER 5.0% ABV	8
BIG ROCK 'NEBULA' NEIPA 6.4% ABV	8
BANDED PEAK 'MOUNT CRUSHMORE' PILSNER 4.4% ABV	8½
BANDED PEAK 'PLAINSBREAKER' PALE ALE 5.0% ABV	8½
PILE O' BONES WHITE IPA 5.0% ABV	8½
BIG ROCK 'ROCK CREEK' APPLE CIDER 5.5% ABV	8½
BANDED PEAK 'MICROBURST' HAZY IPA 6.1% ABV	8½
SAMUEL ADAMS 'WICKED EASY' IPA 4.7% ABV	9
LUCKY BASTARD 'SASKATOON' BERRY ICED TEA 5.0% ABV	9
STELLA ARTOIS 5.0% ABV	10
GUINNESS (560ml) 4.2% ABV	11
ROTATING TAPS	MP
<i>ask your server about our current rotating selections</i>	

PB & B (1oz & 385ml)

skrewball peanut butter
whiskey & a social lager®

12