

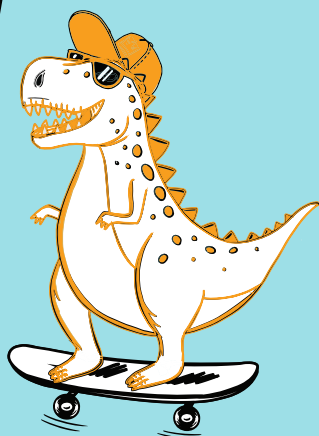


BEER LIST



BROWNS CRAFTHOUSE[®]
KITCHEN  BAR

WHY BE SALTY WHEN
YOU CAN BE MALTY?



ON TAP

SOCIAL LAGER® 5.0% ABV	6¾
HOWE SOUND 'GARIBALDI' HONEY BLONDE 5.0% ABV	7¼
SOCIAL IPA 6.5% ABV	7¼
BOMBER 'AVANT-GARDE' PILSNER 4.8% ABV	7½
FIELD HOUSE SALTED LIME MEXICAN LAGER 4.9% ABV	7½
STEEL & OAK RED PILSNER 5.0% ABV	7½
HOYNE 'DARK MATTER' 5.3% ABV	7½
MOODY ALES & CO 'ORCHARD' HAZY PALE ALE 4.6% ABV	7¾
FERNIE 'CAMPOUT' WEST COAST PALE ALE 5.4% ABV	7¾
YELLOW DOG 'PLAY DEAD' IPA 6.8% ABV	7¾
33 ACRES OF DARKNESS SCHWARZBIER 5.0% ABV	8½
TWIN SAILS 'DAT JUICE' CITRA PALE ALE 5.2% ABV	8½
PARKSIDE 'DREAMBOAT' HAZY IPA 6.3% ABV	8¾
BEERE BREWING 'PINKY TUSCADERO' SOUR 5.0% ABV	9
FOUR WINDS 'NECTAROUS' DRY-HOPPED SOUR 5.5% ABV	9
SUPERFLUX 'COLOUR & SHAPE' IPA 6.5% ABV	9½
GUINNESS (560ml) 4.3% ABV	11
BRICKERS 'ORIGINAL' DRY CIDER 5.4% ABV	11
PHILLIPS 'DINO SOUR' ROTATING TAP	MP

PB & B (1oz & 385ml)

skrewball peanut butter
whiskey & a social lager®

12